

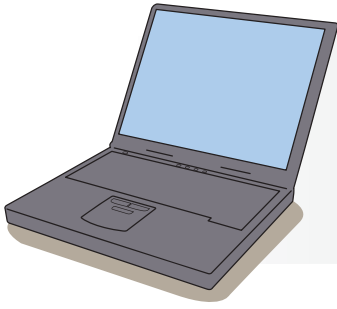
## ⇒ Soluciones móviles



### ⇒ **HP Pavilion dv2118LA**

Windows® XP Home Edition Original  
Intel® Core™ Solo T1350 con Tecnología Móvil Intel® Centrino®  
1.86 GHz  
2MB L2 Cache, 533MHz FSB  
14.1" WXGA High-Definition\* HP BrightView Widescreen Display (1280 x 800)  
maximum external monitor resolution is 1600 X 1200 non-interlaced  
"512MB DDR2 667MHz Soporte para Dual Channel\*"  
1 x 512MB  
80GB (5400RPM)\*  
Intel Graphics Media Accelerator 950 (shared)  
Up to 64MB Total Available Graphics Memory  
Super Multi DVD±R/RW/RAM y CD-RW Combo Drive con soporte para doble capa  
"Dual format DVDRW, but only +R double layer:24X CD Read/ 24X CD-R Write/ 16X  
CD-RW Write/ 8X DVD Read/ 8X DVD+R Write/ 4X DVD+RW Write/ 8X DVD-R Write/  
4X DVD-RW Write/ 5X DVD-RAM Read and Write/4X DVD+R9 Read/ 2.4X DVD+R9  
Write"  
HP Pavilion Webcam with Integrated Microphone  
HP Mobile Remote Control 2.1  
Mobile Stereo Earbud Headphones (1 pair)  
HP xb3000 Expansion Base  
HP QuickDock  
High speed 56K  
10/100BASE-T Ethernet LAN  
802.11b/g WLAN  
101 key compatible  
QuickPlay Music and DVD buttons  
2 Quick Launch Buttons  
Touch Pad con boton para Activar/desactivar y área Scroll vertical  
Internal speakers  
Altec Lansing  
6 cell battery (2.0Ah)  
5-in-1 integrated Digital Media Reader\* for Secure Digital cards, MultiMedia cards,  
Memory Stick, Memory Stick Pro, or xD Picture cards  
Does not support Memory Stick Duo  
33.4 cm (W) x 23.7 cm (L) x 2.6 cm (H)  
2.41kg  
1 Year limited warranty





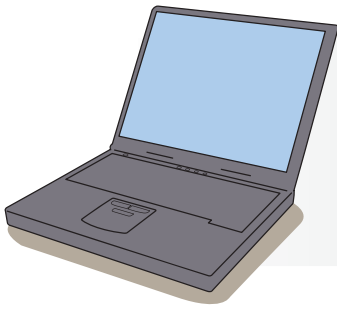
## → Soluciones móviles



### → HP Pavilion dv2222LA

Windows® Vista Home Basic  
Intel® Pentium® dual core processor T2060\*  
1.60 GHz  
1MB L2 Cache, 533MHz FSB  
14.1" WXGA High-Definition\* HP BrightView Widescreen Display (1280 x 800)  
maximum external monitor resolution is 1600 X 1200 non-interlaced  
1024MB 667MHz DDR2 System Memory (2 Dimm)  
2 x 512MB  
80GB (5400RPM) Hard Drive\*  
Intel Graphics Media Accelerator 950 (shared)  
Up to 64MB Total Available Graphics Memory  
Super Multi DVD±R/RW/RAM y CD-RW Combo Drive con soporte para doble capa (Double Layer)  
"Dual format DVDRW, but only +R double layer: 24X CD Read/ 24X CD-R Write/ 16X CD-RW Write/ 8X DVD Read/ 8X DVD+R Write/ 4X DVD+RW Write/ 8X DVD-R Write/ 4X DVD-RW Write/ 5X DVD-RAM Read and Write/ 2.4X DVD+R9 Read/ 2.4X DVD+R9 Write"  
HP Pavilion Webcam with Integrated Microphone  
HP Mobile Remote Control 2.1  
Mobile Stereo Earbud Headphones (1 pair)  
HP xb3000 Expansion Base  
HP QuickDock  
High speed 56K  
Integrated 10/100BASE-T Ethernet LAN  
802.11b/g WLAN  
101 key compatible  
QuickPlay Music and DVD buttons  
2 Quick Launch Buttons-Capacitive  
Touch Pad with On/Off button and dedicated vertical and horizontal Scroll  
Up/Down pad  
Internal speakers  
Altec Lansing  
6 cell battery (2.2Ah)  
5-in-1 integrated Digital Media Reader\* for Secure Digital cards, MultiMedia cards, Memory Stick, Memory Stick Pro, or xD Picture cards  
Does not support Memory Stick Duo  
33.4 cm (W) x 23.7 cm (L) x 2.6 cm (H)  
2.41kg  
1 Year limited warranty





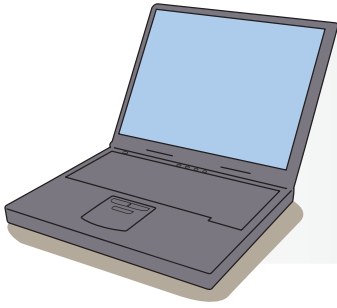
## → Soluciones móviles



### → HP Pavilion dv9265LA

Windows® Vista Home Premium  
Intel® Core™ 2 Duo processor T5600\*  
1.83 GHz  
2MB L2 Cache, 667MHz FSB  
17.0" WXGA+ High-Definition\* HP BrightView Widescreen Display (1440 x 900)  
maximum external monitor resolution is 1600 X 1200 non-interlaced  
2048MB 667MHz DDR2 System Memory  
2 x 1024MB  
"160GB (5400RPM) Hard Drive\* Dual HDD - 80GB x 2"  
NVIDIA GeForce Go 7600  
2048MB: up to 1024MB total graphics memory with 512MB dedicated  
LightScribe SuperMulti 8X DVD±RW with Double Layer Support  
"Dual format DVDRW, but only +R double layer: 24X CD Read/ 24X CD-R Write/ 16X  
CD-RW Write/ 8X DVD Read/ 8X DVD+R Write/ 4X DVD+RW Write/ 8X DVD-R Write/  
4X DVD-RW Write/ 5X DVD-RAM Read and Write/ 2.4X DVD+R9 Read/ 2.4X DVD+R9  
Write"  
HP Pavilion Webcam with Integrated Microphone  
HP Mobile Remote Control 2.1  
Mobile Stereo Earbud Headphones (1 pair)  
HP xb3000 Expansion Base  
HP QuickDock  
High speed 56K  
10/100/1000 Gigabit Ethernet LAN  
Intel® PRO/Wireless 3945ABG Network Connection & Bluetooth™  
Notebook keyboard with scroll bar and integrated numeric keypad  
QuickPlay Music and DVD buttons  
2 Quick Launch Buttons  
Touch Pad with On/Off button and dedicated vertical Scroll Up/Down pad  
Internal speakers  
Altec Lansing  
8-cell Lithium-Ion (63Whr)  
5-in-1 integrated Digital Media Reader\* for Secure Digital cards, MultiMedia cards,  
Memory Stick, Memory Stick Pro, or xD Picture cards  
Does not support Memory Stick Duo  
28.5cm (L) x 39.6cm (W) x 3.16cm (H)  
3.52kg  
1 Year limited warranty





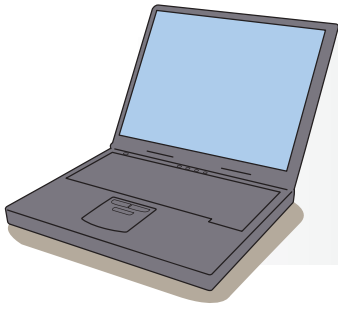
## → Soluciones móviles



### → HP Pavilion tx1030LA

Windows® Vista Home Premium  
AMD Turion™ 64 X2Dual-Core Mobile Technology TL-50  
1.6GHz  
256KB + 256KB L2 Cache  
12.1" WXGA High-Definition\* HP BrightView Widescreen Display (1280 x 800)  
Integrated Touch-screen (Convertible Display - Panel rotates 180° and folds flat)  
maximum external monitor resolution is 1600 X 1200 non-interlaced  
1024MB 667MHz DDR2 System Memory (2 Dimm)  
2 x 512MB  
120GB (5400RPM) Hard Drive\*  
NVIDIA GeForce Go 6150  
1024MB: up to 320MB TurboCache total graphics memory with 64MB dedicated  
LightScribe SuperMulti 8X DVD±RW with Double Layer Support  
"Dual format DVDRW, but only +R double layer: 24X CD Read/ 24X CD-R Write/ 16X  
CD-RW Write/ 8X DVD Read/ 8X DVD+R Write/ 4X DVD+RW Write/ 8X DVD-R Write/  
4X DVD-RW Write/ 5X DVD-RAM Read and Write/ 2.4X DVD+R9 Read/ 2.4X DVD+R9  
Write"  
HP Pavilion Webcam with Integrated Microphone  
HP Mini Remote Control 3.0 (34mm Express Card Version)  
Mobile Stereo Earbud Headphones (1 pair)  
HP xb3000 Expansion Base  
HP QuickDock  
High speed 56K  
Integrated 10/100/1000 Gigabit Ethernet LAN (RJ-45 connector) \*  
802.11a/b/g WLAN & Bluetooth  
101 key compatible  
QuickPlay Music and DVD buttons  
3 Quick Launch Buttons-Capacitive  
Touch Pad with On/Off button and dedicated vertical and horizontal Scroll  
Up/Down pad  
Internal speakers  
Altec Lansing  
"4 cell battery(2.55Ahr) + extra 6 cell battery (2.55Ahr)"  
5-in-1 integrated Digital Media Reader\* for Secure Digital cards, MultiMedia cards,  
Memory Stick, Memory Stick Pro, or xD Picture cards  
Does not support Memory Stick Duo  
22.4cm(L) x 30.6cm(W) x 3.13cm (H) (4 cells)  
1.92kg (W/weightsaver)  
1 Year limited warranty





## ⇒ Soluciones móviles

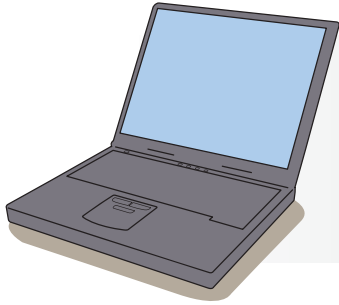
**COMPAQ**



### ⇒ **Compaq Presario V3218LA**

Windows Vista™ Home Basic  
Mobile AMD Turion™ 64 MK-36  
2.0 GHz  
512 KB L2 cache  
14.1" WXGA High-Definition\* HP BrightView Widescreen Display (1280 x 800)  
maximum external monitor resolution is 1600 X 1200 non-interlaced  
"512MB DDR2 667MHz Soporte para Dual Channel\*"  
1 x 512MB  
120GB (5400RPM) Hard Drive\*  
NVIDIA GeForce Go 6150  
=512mb: Up to 96MB Total Available Graphics Memory  
SuperMulti 8X DVD±R/RW with Double Layer Support  
"Dual format DVDRW, but only +R double layer:24X CD Read/ 24X CD-R Write/  
16X CD-RW Write/ 8X DVD Read/ 8X DVD+R Write/ 4X DVD+RW Write/ 8X  
DVD-R Write/ 4X DVD-RW Write/ 5X DVD-RAM Read and Write/2.4X DVD+R9  
Read/ 2.4X DVD+R9 Write"  
High speed 56K modem \*  
Integrated 10/100BASE-T Ethernet LAN (RJ-45 connector) \*  
802.11b/g WLAN  
101 key compatible  
Touch Pad with dedicated vertical and horizontal Scroll Up/Down pad  
Internal speakers  
Altec Lansing  
6 cell battery (2.0Ah)  
33,4 x 23,7 x 2,6 (cm)  
2,41 kg  
1 Year limited warranty





⇒ Soluciones móviles

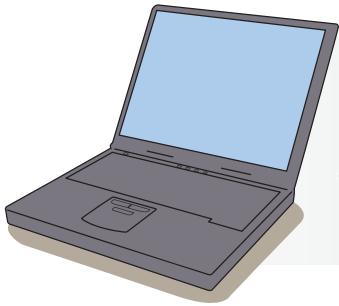
**COMPAQ**



⇒ **Compaq Presario F505LA**

Windows Vista™ Home Basic  
Mobile AMD Sempron™ Processor 3400+  
1.8 GHz  
256KB L2 Cache  
15.4" WXGA High-Definition\* HP BrightView Widescreen Display (1280 x 800)  
maximum external monitor resolution is 1600 X 1200 non-interlaced  
512MB 533MHz DDR2 System Memory (1 Dimm)  
1 x 512MB  
80GB (5400RPM) Hard Drive\*  
NVIDIA GeForce Go 6150  
=512mb: Up to 96MB Total Available Graphics Memory  
24X DVD/CD-RW Combo Drive  
24X CD read/8X DVD read/5X DVD-RAM read/24X CD-R read and write/24X  
CD-RW read and write  
High speed 56K modem \*  
Integrated 10/100BASE-T Ethernet LAN (RJ-45 connector) \*  
802.11b/g WLAN  
101 key compatible  
Touch Pad with dedicated vertical and horizontal Scroll Up/Down pad  
Internal speakers  
Altec Lansing  
6 cell battery (2.0Ah)  
35.73cm (L) x 25.72cm (W) x 3.28cm(H)  
2.99kg  
1 Year limited warranty





## ⇒ Soluciones móviles

**COMPAQ**



### ⇒ **Compaq Presario F506LA**

Windows Vista™ Home Basic  
AMD Turion™ 64 Mobile Technology MK-36  
2.0 GHz  
512KB L2 Cache  
15.4" WXGA High-Definition\* HP BrightView Widescreen Display (1280 x 800)  
maximum external monitor resolution is 1600 X 1200 non-interlaced  
512MB 533MHz DDR2 System Memory (1 Dimm)  
1 x 512MB  
80GB (5400RPM) Hard Drive\*  
NVIDIA GeForce Go 6150  
=512mb: Up to 96MB Total Available Graphics Memory  
SuperMulti 8X DVD±R/RW with Double Layer Support  
"Dual format DVDRW, but only +R double layer:24X CD Read/ 24X CD-R Write/  
16X CD-RW Write/ 8X DVD Read/ 8X DVD+R Write/ 4X DVD+RW Write/ 8X  
DVD-R Write/ 4X DVD-RW Write/ 5X DVD-RAM Read and Write/2.4X DVD+R9  
Read/ 2.4X DVD+R9 Write"  
High speed 56K modem \*  
Integrated 10/100BASE-T Ethernet LAN (RJ-45 connector) \*  
802.11b/g WLAN  
101 key compatible  
Touch Pad with dedicated vertical and horizontal Scroll Up/Down pad  
Internal speakers  
Altec Lansing  
6 cell battery (2.0Ah)  
35.73cm (L) x 25.72cm (W) x 3.28cm(H)  
2.99kg  
1 Year limited warranty

